



Installing and using md5deep

1 Downloading

- **Download ZIP file**
 - Download the ZIP file from the <http://md5deep.sourceforge.net/#download> website by clicking the “Windows Binary” link.
 - Provisionally save this file to the desktop.

Download md5deep

Stable Version

The latest stable version of md5deep is version 2.0.1 and was released on 31 Oct 2007. You can take a look at the [complete changelog](#), but here are the changes in the latest version:

New Features

- Using GNU Autotools for configuration and compilation. This should help avoid platform specific issues such as SHA-1 problems previously found on 64-bit versions of AIX.
- Added support for files with Unicode characters in their filenames on Microsoft Windows.
- Added support for EnCase hash sets (.hash files).
- Updated web site and quick start guide
- Slightly reduced the size of all of the executables by removing duplicated code.

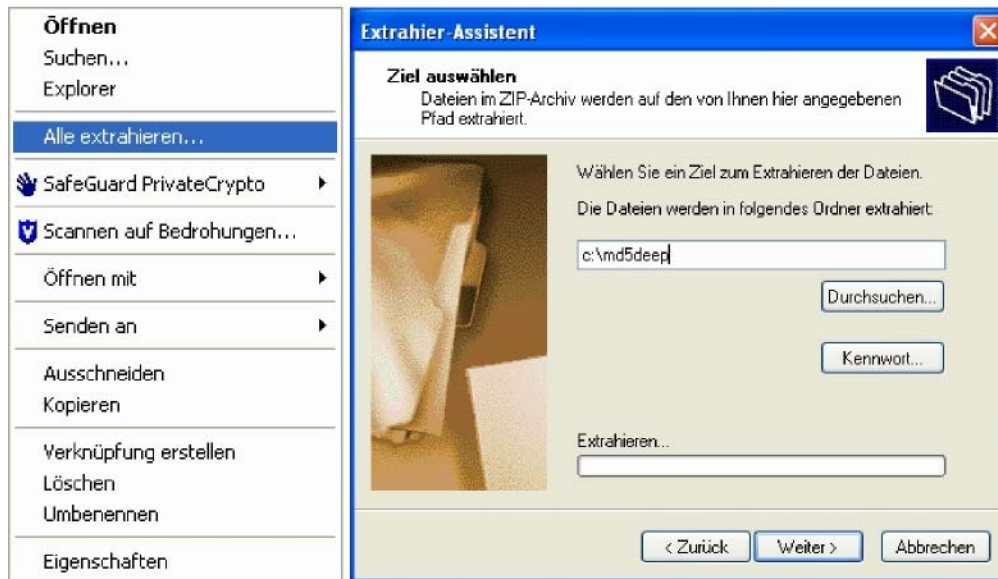
Bug Fixes

- Added support for older Linux systems that don't have the latest and greatest ioctl functions.
- Fixed time estimation mode for block devices on OS X and Linux
- Fixed cosmetic error where estimated time remaining mode is being used in conjunction with piecewise hashing. Time estimates are now based on the whole file, not just each piece.
- Clarified licensing issues in COPYING for tiger.c
- Changed some data types in hashing functions to C99 standard. Whirlpool seems to be working well enough without changes.
- Wrapped all of the global variables into the state structure

Version 2.0.1	31 Oct 2007	Windows binary	SHA256 7c047c433de7009ab825205da283a9fdb5f4107a15:
		Cygwin binary	SHA256 e6d200ceb7ed0e326226e16a2d7c8bc4c2b074acf6
		source code	SHA256 7ea4ba5257a1e08beb1f05430bf33a9ac311040ed0

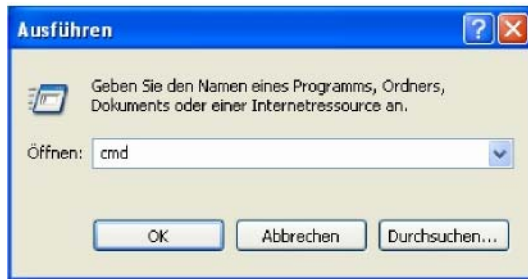
2 Installing

- Extract the downloaded file in the [c:\md5deep](#) folder
→ With the mouse, right-click on the file and select “Extract all”.



3 Using

- **Start the MS-DOS console**
→ Start → run → enter "cmd"



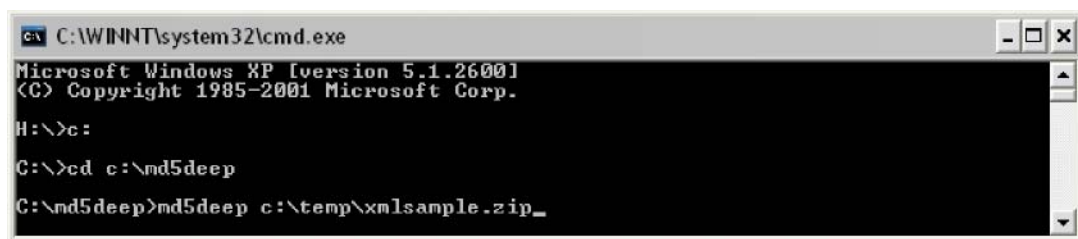
- **Go into the "md5deep" folder**
→ "c:\\" → "cd c:\md5deep"



- **Select a hash algorithm:**
 - MD-5 (md5deep.exe)
 - SHA-1 (sha1deep.exe)
 - SHA-256 (sha256deep.exe)
 - Tiger (tigerdeep.exe)
 - Whirlpool (whirlpooldeep.exe)
- **Open the required file with the relevant hash program**
 - Enter the following elements:
 - File name of the relevant hash program (see above)
 - Space
 - Name of the file to be checked

→ For example: "md5deep [c:\temp\xmlsample.zip](#)"

/\ If the file name contains spaces, a quotation mark (") must be inserted both before and after the file name.



- **The result is then displayed.**

